

SHINYAPPS.IO



Presenta:
Miguel Ángel Rodríguez Muíños
@mianromu

Coautores:
M^a José Ginzo Villamayor / Rafael Rodríguez Gayoso

O PROXECTO SHINYAPPS DE MELISA

Miguel Ángel Rodríguez Muíños, María José Ginzo Villamayor e Rafael Rodríguez Gayoso

¹MELISA. Asociación de Usuarios de Software Libre da Terra de Melide

RESUMO

A Asociación de Usuarios de Software Libre da Terra de Melide (MeLiSa) ven desenvolvendo, durante os últimos anos, unha labor de apoio e divulgación do software libre R.

Neste relatorio se presentará o novo proxecto de MELISA baseado en ShinyApps no que se porá a disposición dos interesados un acceso «Basic» a <https://www.shinyapps.io/> para poder aloxar e desenvolver proxectos baseados en RStudio e Shiny. Explicarase o procedemento de solicitude de acceso así como o sistema de xestión de tokens para poder aloxar aplicacións no espazo de MELISA.

* A diferenza do acceso «Free» o «Basic» soporta máis memoria RAM, capacidade de proceso, instancias simultáneas e horas activas.

Share your Shiny Applications Online

Deploy your Shiny applications on the Web in
minutes

Sign Up



shinyapps.io



Log in

— or —

Log in with Google

Log in with GitHub

[Forgot your password?](#) | [Sign up](#)

[Dashboard](#)[Applications](#)[Account](#)[Profile](#)[Tokens](#)[Domains](#)[Settings](#)[Usage](#)[Billing](#)[Members](#)

APPLICATION 1198181 - SIMCA



Overview



Metrics



URLs



Settings



Users



Logs



Restart



Archive



Delete

OVERVIEW

Id	1198181
Name	SIMCA
URL	https://melisagal.shinyapps.io/SIMCA/
Status	Sleeping
Size	xxlarge
Deployed	Oct 8, 2019
Updated	Oct 9, 2019
Created	Sep 16, 2019
Bundle	Download

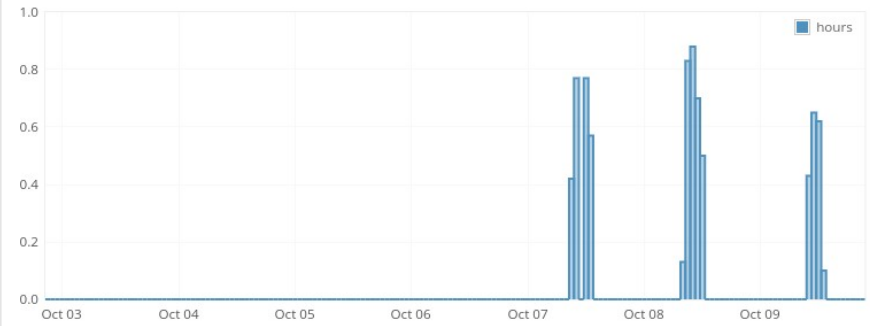
INSTANCES

Id: 3070859



APPLICATION USAGE

Total: 7.37 hours



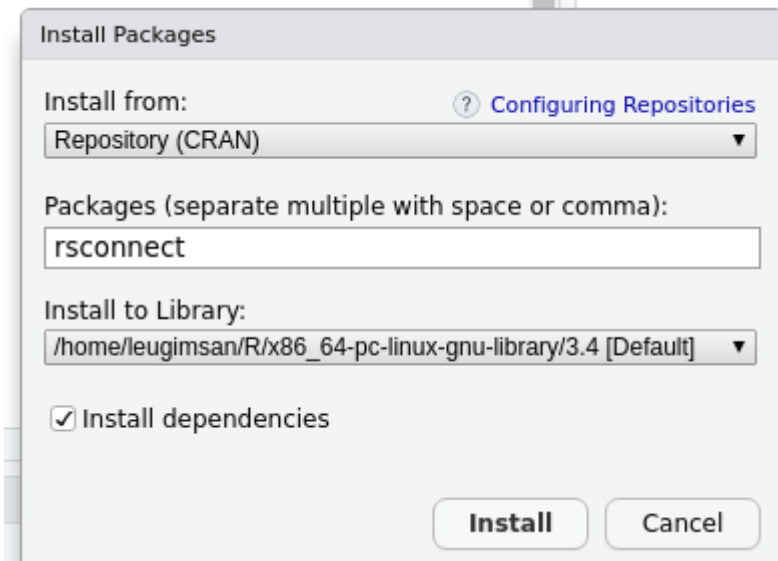
The `shinyapps` package must be authorized to your account using a token and secret. To do this, click the copy button below and we'll copy the whole command you need to your clipboard. Just paste it into your console to authorize your account. Once you've entered the command successfully in R, that computer is now authorized to deploy applications to your shinyapps.io account.

```
rsconnect::setAccountInfo(name='melisagal',  
                           token='8E[REDACTED]B',  
                           secret='<SECRET>')
```

Show secret

 Copy to clipboard

OK



```
> library(rsconnect)
> rsconnect::setAccountInfo(name='melisagal', token='8[REDACTED]B', secret='4[REDACTED]')
> |
```



app.R x

Run App

```
1 #
2 # This is a Shiny web application. You can run the application by clicking
3 # the 'Run App' button above.
4 #
5 # Find out more about building applications with Shiny:
6 #
7 # http://shiny.rstudio.com/
8 #
9
10 library(shiny)
11
12 # Define UI for application that draws a histogram
13 ui <- fluidPage(
14
15   # Application title
16   titlePanel("Old Faithful Geyser Data"),
17
18   # Sidebar with a slider input for number of bins
19   sidebarLayout(
20     sidebarPanel(
21       sliderInput("bins",
22                 "Number of bins:",
23                 min = 1,
24                 max = 50,
25                 value = 30)
26     ),
27
28     # Show a plot of the generated distribution
29     mainPanel(
30       plotOutput("distPlot")
31     )
32   )
33 }
```

1:1 (Top Level) ↕ R Script ↕

Publish to Server



Publish Files From: ~/Documentos/PRUEBA

- app.R

Publish From Account: [Add New Account](#)

melisagal: shinyapps.io

Title: PRUEBA

Launch browser

Publish **Cancel**



Seleccione:

Tipo de cancro

Pulmón

Indicador

Taxa axustada

Poboación estándar

Censo de Galicia 2001

 Truncar taxa

Sexo

Homes | Mulleres | Total

Ámbito xeográfico de interese

Galicia

EOXI

Provincia

Anos

1980 | 1981 | 1982 | 1983 | 19



XUNTA DE GALICIA
CONSELLERÍA DE SANIDADE
Dirección Xeral de Saúde Pública



TÁBOA DE DATOS

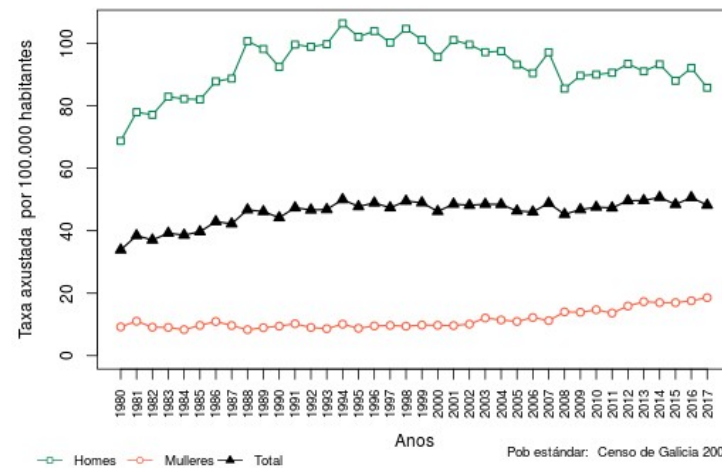
GRÁFICO

METODOLOXÍA

Visualizar gráfico

Gráfico

CANCRO DE PULMÓN Galicia



Pob estándar: Censo de Galicia 2001

Fonte: DXSP

Gracias por vuestra atención

Contacto:
info@melisa.gal